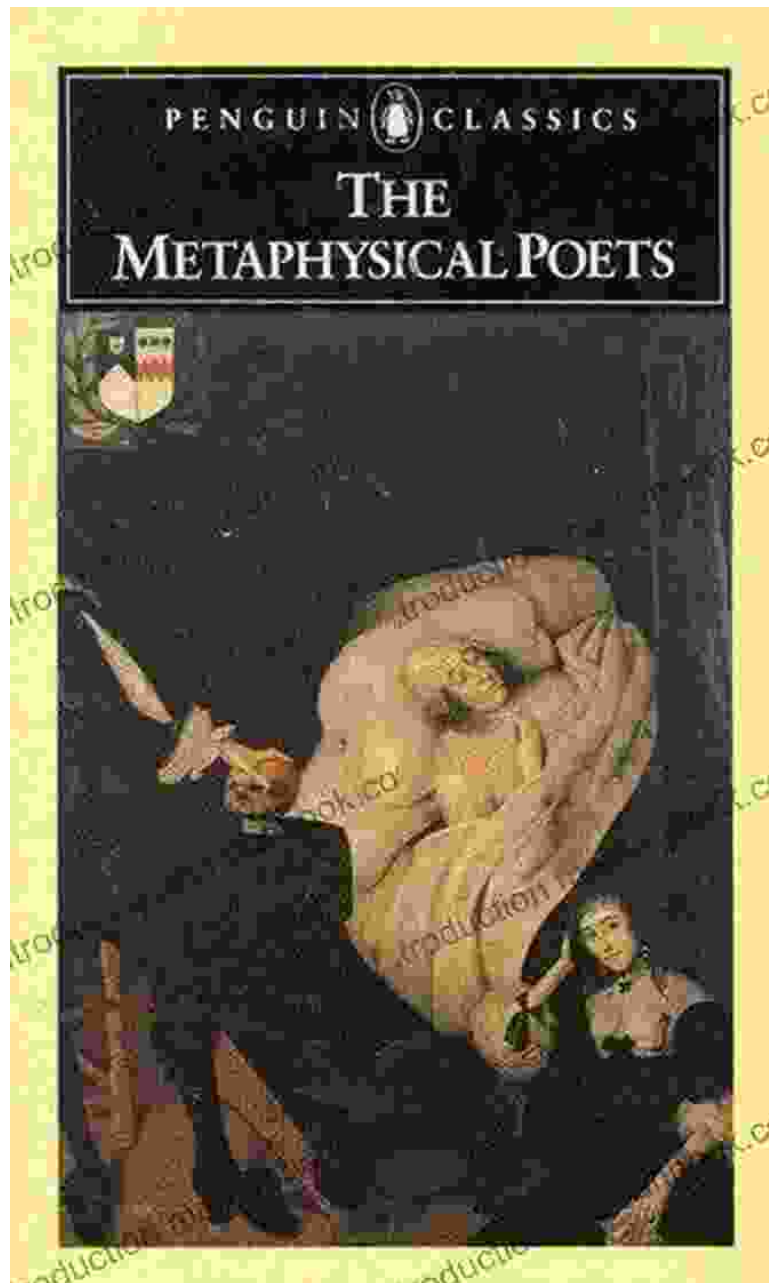


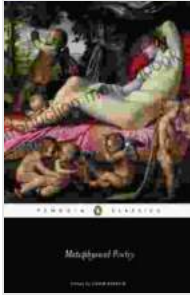
Unveiling the Enchanting World of Metaphysical Poetry: A Journey with Penguin Classics' Colin Burrow



Metaphysical Poetry (Penguin Classics) by Colin Burrow

★★★★☆ 4.7 out of 5

Language : English



File size : 737 KB
Text-to-Speech : Enabled
Screen Reader : Supported
Enhanced typesetting: Enabled
Print length : 395 pages



Defining Metaphysical Poetry: A Tapestry of Intellect and Imagination

Metaphysical poetry, a literary movement that flourished in the 17th century, stands as a testament to the boundless power of human creativity. This genre, characterized by its ingenious use of extended metaphors, paradoxical imagery, and intellectual wit, opens a window into the complexities of the human condition, exploring themes of love, mortality, faith, and the nature of reality.

The term "metaphysical" derives from Aristotle's concept of metaphysics, the philosophical study of the nature of being. Metaphysical poets delved into the abstract, exploring the fundamental questions of existence and the relationship between the physical and spiritual realms. They sought to illuminate the hidden connections within the universe, revealing the extraordinary within the ordinary.

Essential to metaphysical poetry is its intricate interplay of intellect and imagination. While it engages the mind with its complex conceits and philosophical musings, it simultaneously captivates the senses with its vivid imagery and musicality. This dynamic fusion creates a unique and

unforgettable poetic experience, one that challenges, delights, and invites repeated exploration.

John Donne: The Pioneer of Passionate Paradox

When discussing metaphysical poetry, one towering figure inevitably comes to mind: John Donne. Widely regarded as the father of this genre, Donne's poetry is a whirlwind of passionate intensity, witty conceits, and profound introspection. His famous lines, "If I love thee not, love is not love," encapsulate the essence of metaphysical poetry's paradoxical embrace of both worldly and spiritual love.

Donne's poems often revolve around the interplay of love, desire, and the inevitability of death. His exploration of these themes is marked by a raw honesty and an unflinching confrontation of human frailty. Through his masterful use of metaphor, he transforms the physical body into a map of desire, the soul into a battlefield of emotion.

Donne's influence on subsequent generations of poets is immeasurable. His bold experimentation with language and form paved the way for a new era of literary expression, one that continues to inspire and resonate with readers today.

Other Luminaries of the Metaphysical Movement

While Donne is undoubtedly the most prominent figure of metaphysical poetry, he was by no means alone in his pursuit of this innovative genre. A constellation of brilliant poets flourished during this literary period, each contributing their unique voice to the rich tapestry of metaphysical expression.

- **George Herbert:** A devout Anglican priest, Herbert's poetry is characterized by its religious themes and its exploration of the relationship between faith and doubt.
- **Andrew Marvell:** Marvell's poetry is known for its lush imagery, its exploration of nature, and its biting political satire.
- **Henry Vaughan:** Vaughan's poetry is marked by its mysticism, its exploration of the divine in the natural world, and its profound sense of loss.
- **Richard Crashaw:** Crashaw's poetry is characterized by its passionate devotion, its intense imagery, and its exploration of the sensual and spiritual realms.
- **John Milton:** While Milton is more commonly associated with epic poetry, his early work, particularly his sonnets, exhibits strong metaphysical influences.

Penguin Classics' Metaphysical Poetry: A Treasure Trove for Readers

Penguin Classics' edition of Metaphysical Poetry, edited by the renowned scholar Colin Burrow, serves as an invaluable resource for anyone seeking to delve into this captivating genre. Burrow, a leading authority on metaphysical poetry, provides a comprehensive that illuminates the historical and literary context of the movement.

The anthology itself features a diverse selection of poems from the major metaphysical poets, including Donne, Herbert, Marvell, Vaughan, Crashaw, and Milton. Each poem is meticulously annotated, providing readers with essential insights into the complex imagery, allusions, and philosophical underpinnings of the text.

Burrow's editorial work is not merely informative but also illuminating. He unravels the intricate layers of meaning in each poem, revealing the interplay of intellect and imagination that defines metaphysical poetry. His annotations serve as a bridge between the reader and the poet's mind, enhancing the understanding and appreciation of these remarkable works.

Enduring Legacy: Metaphysical Poetry's Timeless Impact

Metaphysical poetry, though born centuries ago, continues to exert a profound influence on literature and culture. Its innovative use of language, its exploration of universal themes, and its timeless insights have resonated with readers across generations.

The metaphysical poets challenged conventional modes of thought and expression, pushing the boundaries of poetic possibility. Their influence can be seen in the works of countless subsequent poets, from Samuel Taylor Coleridge and William Wordsworth to T.S. Eliot and John Ashbery.

Beyond the realm of literature, metaphysical poetry has left an enduring mark on philosophy, theology, and the arts. Its exploration of the nature of reality, the human condition, and the relationship between the physical and spiritual worlds continues to inspire and provoke thought.

: A Voyage into the Heart of Poetry

Metaphysical poetry, with its intricate conceits, vivid imagery, and profound exploration of the human condition, invites us on an unforgettable literary journey. Penguin Classics' *Metaphysical Poetry*, edited by Colin Burrow, provides the perfect guide for this enchanting voyage.

Whether you are a seasoned poetry lover or a curious newcomer, this anthology offers a treasure trove of discovery. Immerse yourself in the brilliance of Donne, Herbert, Marvell, Vaughan, Crashaw, Milton, and their fellow metaphysical poets. Allow their words to ignite your imagination, challenge your intellect, and transport you to a realm where the ordinary becomes extraordinary and the boundaries of language dissolve.

In the world of metaphysical poetry, you will find not only a collection of poems but a mirror into the depths of human experience. It is a poetry that prompts contemplation, sparks debate, and leaves an enduring imprint on the soul.



Metaphysical Poetry (Penguin Classics) by Colin Burrow

★★★★☆ 4.7 out of 5

Language : English

File size : 737 KB

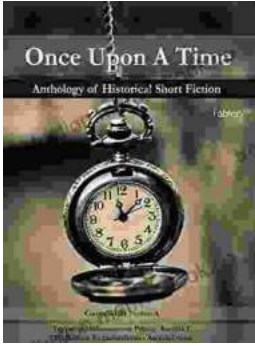
Text-to-Speech : Enabled

Screen Reader : Supported

Enhanced typesetting : Enabled

Print length : 395 pages





Once Upon a Time: A Journey Through Enchanting Realms and Timeless Tales

Once Upon a Time, ABC's beloved fantasy adventure series, invites you to embark on a captivating journey through...



Tutoring the Player Campus Wallflowers: A Comprehensive Guide to Helping Struggling Students Succeed

College campuses are often filled with students who are eager to learn and succeed. However, there are also a significant number of students who...